

Artisans Quarterly Review

ARTISANS OF THE VALLEY

The End of Days - 2012

- **Still Standing After Sandy**
- **Don't Throw it Out!**
- **Ashley & Connor's Drive**
- **More of Mike's Maki's**
- **Artisans Goes Log Scavenging**
- **Princeton Refractory Tables Finished**
- **Hand Turned Ornaments**
- **Artist Thomas Whistance**
- **A Trailer Incident**
- **So You've Found Mold**
- **Artist C.A. Shofed**
- **"Common Thread" - Art Show!**
- **Repurpose for Display**
- **Wood Inventory Show Off**
- **The Mistletoe 5K Race**
- **WWII Statue Restoration**
- **There Are Zombies Among Us**
- **Dinner Dates**
- **The World Lives On**
- **Looking Ahead at 2013**

STILL STANDING AFTER SANDY

October left our region with a major disaster; our hearts go out to all of those who lost so much during hurricane Sandy.

Artisans came through with a short disruption in power and the loss of a few trees, no complaints here. We maintain most of our offsite storage at Buxton's Boxes which was built with proper drainage and to withstand the winds. Everything we have on hand remained safe throughout the storm. The first response teams, utilities, and gov't crews all busted their asses to keep things going and get the power back on. Thank you!

Artisans will be ready to take on restoration projects from the storm as well as to provide custom furniture to replace what was lost. See below for more hints and tips for storm damage situations.

We are also ramping up scavenging and salvage operations to take in logs from storm fall, construction, or, well, any reason a tree may have to fall. See page two for details of our pending log reclamation projects.

As we close 2012, assuming that the world doesn't come to an end along with it, we'll enter 2013 already set with restoration projects booking into spring. We also locked in commissions for four concrete dovetail benches for next spring, and we're aligning to work on another wave of restorations from Princeton University next summer.

This was a very busy year and, looking forward, 2013 is going to come in strong and likely make this year look pretty sparse. We'll keep you all posted!

DON'T THROW IT OUT UNTIL WE CHECK IT OUT!

Artisans is available to provide assistance in evaluating storm, flood, fire, or "creative human" damaged furniture. Don't throw it out until we've had a chance to check it out. We're good at fixing stuff! When it comes to your heirlooms and treasures, restoration and refinishing is often within reach even after smoke or submersion damage.

We can provide onsite evaluation or, with detailed photos give a reasonable estimate of restoration feasibility and costs. We're geared up to take on the next wave of restorations, although, we actually still have work in progress and pending from Irene last summer. Our goal is to work with our clients, insurance companies, and contractors to time restorations so that our delivery is scheduled close to when your homes are back to life.

Keep in mind when you have a flood damage situation it is critical to mitigate mold and moisture damage as quickly as possible. When we collect your furniture we will quickly remove all upholstery and run the piece through a chemical process to kill all the mold and bacteria. The furniture will then be stored for several months allowing it to dry out and reacclimate before restoration begins. This is critical to ensure the wood returns to a reasonable moisture level, finishing wet wood will not provide a good result.

So don't throw it out! Contact us to work with your insurance adjusters to provide estimates for recovery, storage, and restoration.



ASHLEY & CONNOR'S DRIVE

Sunday December 2, 2012 Artisans delivered donations for victims of Super Storm (Hurricane) Sandy to Pioneer Hose Co #1 in Brick Township, NJ (Station 22). Our donation drive was organized by Ashley Hutchinson, age 10, with the help of her brother Connor, age 8.

All donations will be managed by Pioneer members and will be given directly to families in need. We would like to say thank you to our friends, neighbors, and families and all of our community for their contributions. We gathered a trailer load!

Donations were collected from our local community by:

*Artisans of the Valley, LLC. of Pennington, NJ * Captain Paul's Firehouse Dogs of Lawrenceville, NJ * Pennington Road Fire Company & First Aid Unit (Station 32) of Ewing, NJ * allquatics of Hamilton, NJ * Donna's Hair Studio & Spa of Ewing, NJ.*



MORE OF MIKE'S MAKI'S

Yes, we're repeating and we've already shown maki boards, and these are just a materials variant of the same board templates using walnut and quarter sawn oak. What sets these boards apart is the unique grain including a series of beetle holes and random rotten sections. Scrap to treasure! Again we recover value from wood that would traditionally be cast aside, and never used for something that would come in contact with food.

Thanks to a little modern finishing technique using West Systems epoxy and Waterlox Tung oil the wood is completely sealed and safe for direct contact with food.

The grain is filled with a mix of colored powders in the epoxy and is permanently encapsulated. These maki boards can be washed with soap and water and sanitized for safe use as well as providing a unique open display in your kitchen. Keep watching, a lot more material combinations and a few new concepts are coming!



ARTISANS GOES LOG SCAVENGING

We've decided to step up our scavenging efforts! Once again emphasizing that we hate to see lumber quality logs end up in chippers and split for firewood, we are rallying everyone we know to help us save this valuable natural resource.

Here's a preview of some of the new equipment in our scavenging arsenal to ease efforts involved with gathering large heavy sticks of wood. Our goal is to configure a rig so a crew of one or two can load millable logs.

First up is an ATV skidder. This device will allow us to drag out twelve foot logs up to 22" in diameter to our trailer for loading. A skidder is a fast way to move logs out of rough areas. This setup is very simple, as you drive forward it lifts the front of the log up about a foot off the ground reducing the drag, preventing the log from digging into the ground, and transferring about half of the weight to the wheels. We can now retrieve fallen trees from almost anywhere we can get into with a four wheeler with minimal ground impact.

Second, we wired up a 12,000lb winch on our 4WD pickup as our main muscle, to power a cable system to move the logs. Bringing us to part three, we borrowed a friend's flat bed trailer and designed and welded a portable yarder, a miniature version of the systems shown on shows like Axe Men. This serves a fixed high point to draw in logs from the ground to the deck. In this case our deck is the trailer itself so we can transport the logs directly to the mill.

We are scouting for walnut, cherry, spalted or curly maple, chestnut, white oak, osage orange, and mulberry. If you have an oversize cedar, apple, pear trees, or another interesting exotic wood we would be interested in checking it out. We'll also be taking a few poplar trees for large carving projects.

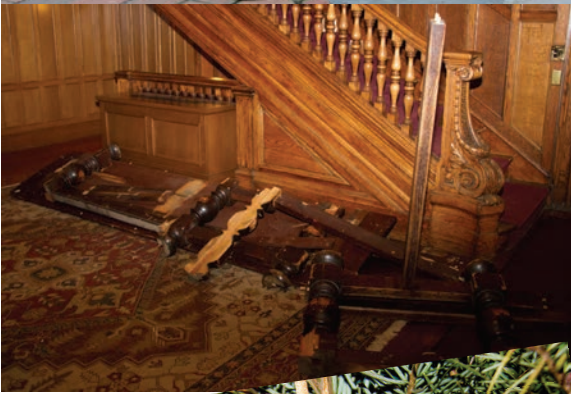


This Unique Creation is by Country ATV. Pick one up and join the scavenging brigade! <http://www.countryatv.com/atv-log-skidder.htm>

**PRINCETON
REFRACTORY TABLES
FINISHED!**

A new life for four oak refractory tables. These pieces were shown in progress in our last issue. All are now completed and back on duty serving Princeton students.

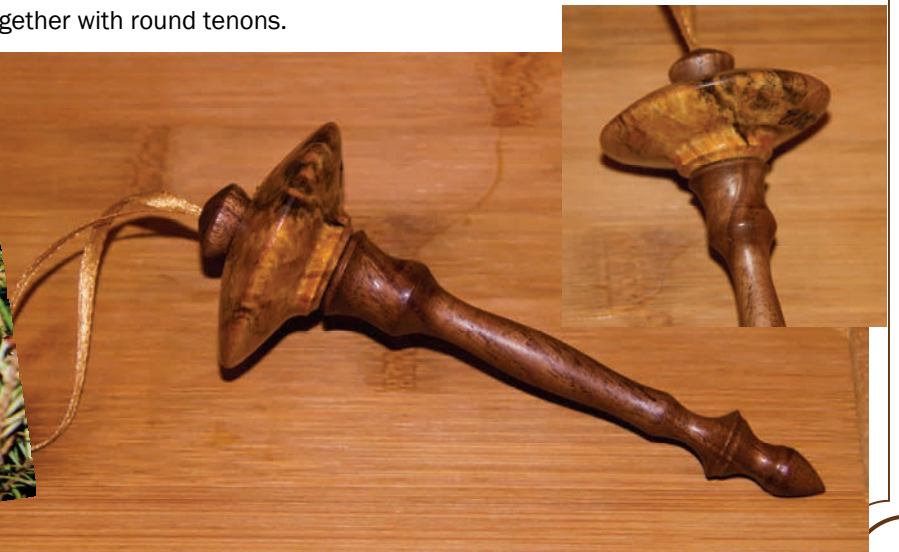
These were back breaking to move around the shop, they gained weight as they were reassembled from splinters into furniture. Even though we removed quite a bit of material returning the legs and planing the surfaces, the new beam structures and lamination layers applied to the tops probably added 75lbs to each piece.



H A N D T U R N E D O R N A M E N T S

Playing along with the holiday theme seems logical given the timing of this issue's release. Mike was left alone with a lathe again and this time his project of choice was turning a one-of-a-kind Christmas tree ornament.

Spun in spalted maple and walnut, this piece incorporates some setup tricks. The loop of the ribbon is fed through a hole in the top cap and tied into a knot prior to gluing the three pieces together. The top and bottom sections fit together with round tenons.



THOMAS WHISTANCE



Thomas and his wife Mairead

Thomas joined us for "The Blending of Art & Wine - 2011" rounding out our elements of artwork by including turnings. What really caught our attention is that Thomas pushes the boundaries of what is turned into what is no longer round. A mastery of precision is required to handle pierced and irregular turnings, and the insight and planning when building the multiple material blanks demonstrates creative thought beyond three dimensions.

A native Canadian, he grew up with a great fondness for open spaces and the appreciation of nature's vast wonders. He spent many a summer exploring and canoeing along the Georgian Bay, Algonquin Park and the Rideau Canal, appreciating the beauty of the natural untouched tree lines of Canada's vast forests.

This explains his affinity for natural form; but we were still curious how he developed the discipline and dexterity to take a lathe well beyond what most turners would even dream feasible. Lathes can be, well, scary! After all you are shoving a sharpened metal shaft into an irregularly shaped fast spinning chunk of wood. An intuitive awareness of axial/convex space, knowledge of how his medium will react, a sharp tool, and steady confidence in each cut are all critical to Thomas's success.

Further exploration into his past brings perspective; as an accomplished VIP squadron military pilot in the Canadian Air Force duty took him throughout North America, Europe and Africa exposing him to many cultures across the globe and providing opportunity to fly many Dignitaries such as Queen Elizabeth, Lady Dianna, Pierre Elliot Trudeau and numerous foreign Heads of State.

What does flying a plane have to do with turning a bowl? It's a matter of patience, control, awareness, stamina, and determination. Hours in flight, under stress, minute aspects of his planes maneuverability at the mere flick of his wrist. When you intertwine an artistic drive into an Air Force pilot, then provide him in a set of tools and stand him in front of a lathe apparently amazing things like this turn out!

His previous experiences, appreciation of the different cultures and types of woods throughout the world has lent itself to develop Thomas's eye for detail in his art work and his love of the fluidity of forms in "wood turning". In 2003, Thomas, his wife, and sons moved from Canada to New Jersey. He is now fully dedicated to wood turning and creating his art work. His passion for taking a natural wood, something beautiful from nature, and re-inventing it into a shape and form of equal beauty aligns with the world's focus on "going green".

Artisans is proud to have shown our work with Thomas and we always remain in awe of his talents and creativity. Recent features include Design NJ, Best of World Wide Artists Volume 1, Amwell Antiques & Fine Art Gallery Presents An Artists Evolution, and Artsyhome.com.

<http://www.whistancewoodart.com/>

El Beso (The Kiss) 4" x 11" diameter in Black Walnut



The new piece is called "Flowering Evolution" representing the various parts of the flower and the butterfly to complete the evolution. It stands about 10.5 inches and is made from Padauk, Cocobolo and Quilted Maple. Even the butterfly is made and turned from wood.



Chironex Fleckeri (Ocean Series) 17" x 8.5" diameter in Cocobolo, Maple Burl, & Koa
In The Sea (Ocean Series) 10" x 6" diameter in BL Maple Burl, Paauk, and Cocobolo





A TRAILER INCIDENT

When we examine our lives and the events within them there are times we reflect and realize what seems like a disaster may have been your lucky day. Just before Thanksgiving our custom outfitted cargo trailer met with an unfortunate conflict with a cement barrier.

On our way to a client's home, we were migrating along the PA Turnpike. Heavy traffic, construction, poor road conditions, and we were moving about 45mph when we felt a sudden jerk. This apparently came from the passenger side front trailer tire blowing out.

The trailer wrenched to the right and caught a temporary cement barrier. The net result is as shown, the trailer is totaled. So why were we

lucky? This could have been far worse. Fortunately nobody was hurt and no other vehicles were involved. Even our truck came through without a scratch. So again, we'll state we were very fortunate to have had an incident without injury.

This trailer served us well since 2003, traveling as far as Georgia, Maine, Minnesota, and Texas; if we're counting correctly 31 states plus DC. We'll salvage what we can and send it to be recycled into a new trailer!

Meanwhile, we ordered a new Wells Cargo trailer with a few upgrades! It should arrive in January ready to begin retrieving and delivering furniture.

This article brings up another important topic: What was in the trailer? This

incident occurred during a delivery, unfortunately we were hauling restored furniture destined for our client's Thanksgiving dinner. Two chairs, two tables, and a server were damaged as a result of the impact. Our goal is to always deliver our client's heirloom furniture in restored condition; we failed for the first time since 1973!

Artisans is highly experienced in fixing moving damage; just normally someone else does the handy work when it comes to breaking it. We self insure in terms of "care & custody" of furniture in our possession for restoration or during construction of commissioned pieces. Rest assured we are committed to serving our clients and ensuring safe handling of their treasures.

When something unfortunate like this occurs we will restore, replace, or replicate anything damaged.

SO YOU'VE FOUND MOLD, NOW WHAT??



So your furniture survived a flood, was stored in the basement, ended up in the barn for a while, or perhaps was the victim of a leaking pipe? Don't throw it out!!!

Whatever the cause the net result is usually discovered as a white or black powdery looking substance stuck on the surface. Mold must be dealt with, its not the end of the universe as we know it, but it must be safely removed as soon as possible.

Generally when a piece of furniture is exposed to a flood restoring and refinishing it is the best course of action. Artisans can provide services to remove existing finishes, usually done with methylene chloride which isn't going to allow the survival of any organism. If the situation is bad, hydrogen peroxide is another viable agent for exterminating bacteria, viruses, mold, and fungi.

The piece shown here is perfectly safe and reasonable to restore and refinish.

C . A . S H O F E D

C.A. Shofed is an everyday artist; not to say he's commonplace or mundane, rather he's an individual with an agenda to capture the simplicity around him in a manner that releases the magnificence contained within normality. What a great artistic philosophy!

"In the last year I have displayed my art in shows in Trenton, NJ and Philadelphia. One show was a month-long exhibit called 'Double Take' which included ten photographs of fire hydrants as they appeared in 'the wild'. I enjoy the natural unedited beauty of things and what I photograph is what I present to my audience. I hope my photography inspires you to stop and look at the everyday beauty of objects you pass by." - C. A. Shofed

Craig initiated his plans for an artistic life in high school focusing on Graphic Arts at Assunpink Vocational School and moving into Advertising Design in college where he also discovered his love for photography. From there, life happened; taking a job as a computer installer entrenched Craig in a professional life that focused on technology vs. perusing his artistic calling.

Now, here's where a good woman can prove herself a great asset. Craig's wife Caroline Wylie refused to allow her husband to lose his artistic roots. Caroline declared her perfect anniversary gifts to be in the form of Craig's artwork. He took on the challenge of fulfilling her expectations with his creative passion and kept art as a priority.

Craig is clearly up and coming in the Trenton and Delaware Valley art communities. His most recent focus brings attention to objects in an urban landscape. Craig notes that his art has been described as "industrial meets nature."

February 2, 2013 Craig will be a feature and host artist at Hopewell Valley Vineyards for a show entitled "Common Thread"

<http://www.amphorartworks.com>



"Scape", "Climb", & "The Past" by C. A. Shofed

COMMON THREADS

Artisans' "Blending of Art & Wine" events continue with a handoff to C. A. Shofed who will be hosting "Common Threads" on February 2nd 1pm - 5pm

Common Threads will be coming to Hopewell Valley Vineyard featuring four distinctly different artists from Trenton NJ, as well as some works from two upcoming artists with ties to New Jersey's capitol city.

C. A. Shofed, Kate Graves, Vanity and Jeff Stewart will present. Their presentation will embark a differential style through multiple channels; photography, sculpture, mixed media, and film. Our feature artist quartet has shown their individual work at various venues in New Jersey, Pennsylvania and further afield, and have been staunch supporters of Trenton's highly successful annual Art All Night 24-hour art festival.

Patrons shall enjoy the opportunity to observe visual harmony between each artists individual distinct themes, all having absorbed inspiration from the culture they discovered within the city of Trenton; they have "Common Threads."

Details on music and entertainment will be announced, keep tabs on Artisans Facebook Page for invitations and updates.

Hopewell Valley Vineyards offers Wine and Brick Oven Pizza available for purchase at the event. General admission is free.



REPURPOSE FOR DISPLAY

Printer's type trays make unique displays for collections of small items. When we can find them, we always find a good use for them.



WOOD INVENTORY SHOW OFF!

This is an inventory show off! Why would we do that? Well simple, we have this walnut butterfly (above right) in storage and available for commission. A perfect unique shaped coffee table or bar, perhaps we inset these into oak or cherry for contrast and build out a full size rectangle table?



If you have ideas for custom projects in mind we can select from our inventory or draw from a variety of suppliers providing domestic and exotic materials scouted around the world.

This walnut log (shown left) is now milled into slabs that will finish a full three inches thick. We're expecting Willard Brother's to pull it out of the kiln soon and we're looking forward to planning it down and seeing what treasures we have rescued from the firewood and chipper piles least season.



Got Wood? - Let us know!

THE MISTLETOE 5K 2012



Mercerville Fire Company of Mercerville, NJ sponsored the first annual Mistletoe 5K - A race dedicated to raising funds for the Wounded Warrior Project (WWP), a nonprofit organization whose mission is to honor and empower wounded warriors.

WWP serves to raise awareness and enlist the public's aid for the needs of severely injured service men and women, to help severely injured service members aid and assist each other and to provide unique, direct programs and services to meet their needs. For more information, please call visit www.woundedwarriorproject.org.

Shown left are our elf twins Farrah Johnson Thiel and Sherri Hutchinson on break from hard workshop labor to win a costume contest earning them a shot to be next year's race mascots!

Photo courtesy of Artisans of the Valley



There's not a lot of wood involved in a race, and given Eric has a personal policy that prevents him from **ever** running, the logical way to support this event was play photographer. So he stood at finish line modeling his "Bah Humbug" hat capturing happy smiles of the runners as they made their final sprint. Well, maybe the dog smiled, everyone else looks like they are in some kinda pain.

[Click Here Race Details & Results](#) or visit www.mercervillefire.com



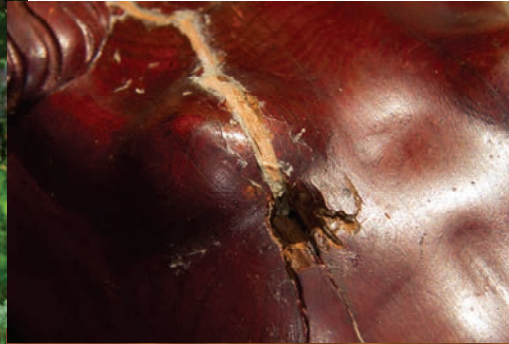
Photo courtesy of Artisans of the Valley



WWII STATUE RESTORATION (LEAVING THE BULLET HOLES INTACT)



This restoration is a unique Szervátnisz pre-WWII hand carved statue . This piece survived in Poland with only a few wounds and scars including some bullet holes received during a skirmish our clients family survived.



We stabilized the piece inserting material into a crack that was spreading rapidly since the piece was shipped to the US.

The material was colored to match and adhesive injected into the crack to secure the piece from further splitting. The crack remains obvious, but is no longer active.



The bullet holes are critical to the history of the statue, so we left them all open. Damaged sustained in conflict is something of a badge to a piece like this. The artist, the town, the war, and the family who cherished it all intertwined as the story unfolded.



ZOMBIES AMONG US

We remain committed to the idea that Zombie apocalypse IS approaching. The Myans may have gotten it wrong, Nostradamus obviously is a little skewed on his timing, thus far no asteroid, no nuclear holocaust, and we have yet to be invaded by aliens, nor have we be torched by a solar flare.

Zombies, however, are very real and walking among us every day. The hosts of Zombie Etiquette (Dead Wrong and Corey Sloan) are high functioning zombies who have the power of speech to discuss a variety of topics ranging from independent films to fast cars.

Why is this relevant to Artisans Quarterly Review? Well, Eric got involved!



KULTURÁLIS ÖRÖKSÉGVÉDELMI HIVATAL
MŰTÁRGYFELÜGYELŐI HIBDA
1014 Budapest, Széchenyirivár 107-9. II. em.
Telefon: +36 1 224 5515; fax: +36 1 225 4965
e-mail: muirsg@kth.hu - web: www.kth.hu
MEMORANDUM - HUNGARY
műirsg@kth.hu tel: 0111/2011

MAKING BAD

ZOMBIE ETIQUETTE



DINNER DATES

Just for fun; here's a quick meal sample from one of Eric's random inspirations to cook. Art doesn't have to always mean working with wood.

Opening w/ Fresh Seared Tuna Steak - taking advantage right away of the fresh ground wasabi.

Split Maine lobster tails marinated in lemon and honey Jack Daniels - lightly painted with a mild soy sauce and fresh wasabi. Grilled on bamboo sticks then repainted with just a little more soy/wasabi sauce.

Grilled shrimp - also marinated in the honey Jack Daniels and lemon paired up with grilled sweat peas and portabella mushrooms (soaked in olive oil) and a hand rolled rigatini (yes that's spelled right) boiled with a chili pepper and obviously a bit of salt to cure in a light bite of flavor.

Grass fed fillets (Beechtree Farms - local Hopewell, NJ) - grilled w/ just a touch of salt and pepper and served w/ a side of fresh wasabi. ... And fresh wasabi means you fly in that oddly looking little root thing, peel it, and hand grind/crush it. This is the real stuff not the fake green food coloring in horse radish paste everyone is used too ... not putting down horse radish it's great but it is NOT real wasabi. Different root entirely ...

Tuna sashimi - courtesy of David Tilton caught yesterday! We plated it and ... but yeah it was gone by the time we thought about a photo. Amazing how that happens when you get ahold of something that fresh!

Bread - crispy Italian - just plain why w/ all these other flavors do we really need to knock the bread up too far?

Dessert - Crapes, stuffed with fresh cut strawberries and blackberries in a homemade syrup with a mix of pure Dominican well stuff (we can't give away all the secrets) ... If you wanna know how this is created book a dinner and show up early enough to see the preparations. ... Brown sugar infused abused cream seemed like a logical topping! (Not Shown)

ZOMBIES AMONG US

A little further explanation: Night of the Living Dead is a great film and zombies have accomplished a great deal in cinema. But in reality zombies are losing the PR battle. After all Eric and Mike are both preparing to take on the Zombie Apocalypse!

Zombie Etiquette of Princeton Community Television Friday nights at 9:00 ET. is devoted to improve the way the public views zombies. Host Dead Wrong is quoted to say " We don't expect our next president to be one of us, but we need to do better than cavemen so we don't end up the butt of some insurance company's joke."

Guests include video artists, musicians, and other humanish types. An informed brain is a tastier brain. That being said, Zombie Etiquette does their best to keep you up to date with both technology and culture.

Eric's involvement started when he met Director Lawrence Greenberg (Dead Wrong) and host Kurt Tazelaar (Corey Sloan) through Princeton's Community TV. This brought Eric into the mix for camera, crew, and even a little acting earning him a very small but "poorly acted role" establishing his first official IMDB credits! Perhaps soon his brain will be zombie feed, or maybe it already was?

For Episode Credits & Details Visit <http://www.imdb.com/title/tt2504092/> More Information: <http://www.zombieetiquette.com/>

And for full episodes visit: <http://vimeo.com/channels/zombieet/47045811>



Photo by Weronika Piechota

ARTISANS OF THE VALLEY

HAND CRAFTED CUSTOM WOODWORKING



[Artisans of the Valley](#) offers museum quality period reproductions, original designs by commission, and antique restoration/conservation services, hand carving, modern furniture refinishing, onsite furniture repair, hand made walking sticks, and educational programs. Our website is now over 250 pages, including galleries, feature articles, and educational sections, company background, and our new adventure album section. We extend an open invitation to explore our site, and contact us directly with any inquiries or questions you may have.

Eric M. Saperstein is Master of Artisans, Owner, Webmaster, Editor, Bookkeeper, Buyer, Office Manager, Legal Pit-bull, and he's in charge of vacuuming the shop: eric@artisansofthevalley.com

Stanley D. Saperstein, Master Craftsmen, Author, & Historian founded Artisans of the Valley in 1973. Stanley offers historic presentations, impressions, and various lecture series ranging from Civil and Revolutionary War, American Folk Art, and Interactive Role Play of Characters ... sometimes trying to reenact American Chopper episodes in the shop: woodcarver@artisansofthevalley.com



THE WORLD LIVES ON!

Well, December 21st 2012 came and went without a planetary catastrophe. Well, no doomsday!

"So, have a merry Christmas, happy Chanukah, kwazy Kwanza, a tip-top Tet, and a solemn, dignified Ramadan." - Krusty The Clown



These Extreme Birdhouses are designed and built by John Looser - Absolutely amazing!
<http://www.extremebirdhouse.com/>



2013 CALENDAR RESET

Maybe this quarter we'll finish the redwood burl?

Artist Scott Hanna - Will be making an ink mark using our hand turned pens

John Looser's Extreme Bird Houses (Preview Above!)

We keep trying to find time to turn more things; a beach bowl is pending

More Scavenging Fun - Treasure Hunting for Wood!

Bet's on us getting those spear guns done??

Final Restorations; that's what we have been doing most lately restorations.

Well, who knows? We don't have any idea what you all have coming our way?!



Our studio hours are by appointment. Please call ahead!

Office Address: 60 Bakun Way Ewing, NJ 08638

Shop Address: 103 Corrine Drive Pennington, NJ 08534

Office: 609-637-0450 Shop: 609-737-7170 Fax: 609-637-0452 Cell: 609-658-2955

Email: woodworkers@artisansofthevalley.com

www.artisansofthevalley.com